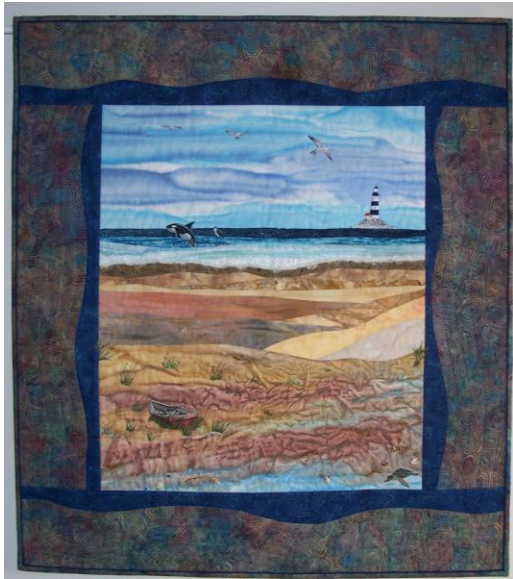


BEACH LANDSCAPE QUILT CLASS



Fabric:

Amounts may vary depending on the size you wish to make. The following minimums are for a small quilt

- ✓ Borders:
 1. Outer at least $\frac{1}{4}$ - $\frac{1}{8}$ yd
 2. Optional inner border at least $\frac{1}{8}$ yd
- ✓ Sky- at least $\frac{1}{4}$ yd. The width will depend on how wide you want your beach scene to be.
- ✓ Sand*- at least $\frac{1}{8}$ yd of up to 11 medium to light sand type fabrics
- ✓ Water*- at least $\frac{1}{8}$ yd of 3 water fabrics (1 dark, 1 medium, 1 light)
- ✓ Optional- Scraps of white for sailboats, fabric that has beach accessory designs that can be fussy cut and appliquéd on to the landscape. Ex. Sailboats, beach chairs, lighthouses, shells, beach houses, etc.) Use your imagination.
- ✓ Muslin, at least 1 $\frac{1}{2}$ " - 2" larger than quilt without borders
- ✓ Fusible web such as lite steam a seam². Used for fussy cut appliquéd.
- ✓ Pellon lightweight fusible interfacing

** You may want to bring more so that you could trade with others at the workshop. Also, if you want to have more water than sand, bring less sand fabric and more water fabric.*

You may want to fuse the interfacing to the muslin before class.

Supplies:

- ✓ Sewing machine
- ✓ Rotary Equipment: mat and cutter with new blade
- ✓ Ruler for straight borders
- ✓ Pins
- ✓ Threads for topstitching- may match fabrics or use metallic or variegated
- ✓ Thread for piecing borders
- ✓ Fabric scissors
- ✓ For those who work fast and think they will be able to quilt in class:
 1. Batting
 2. Optional- accessory buttons (ex. Beach umbrella, bucket, etc), shells or anything you might want to use. Accessorize at will.
 3. Glue if using accessories.
 4. Masking tape
 5. Pins for basting